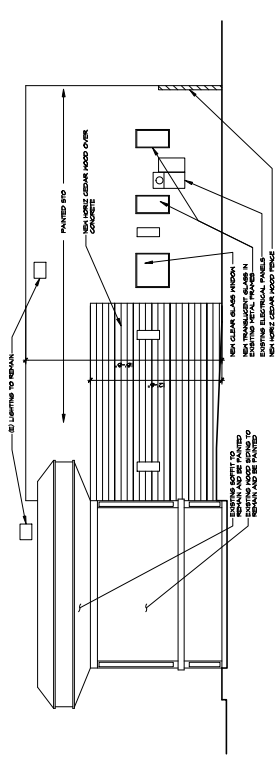
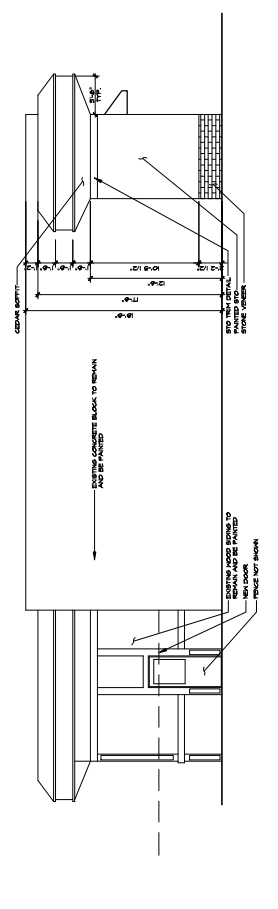


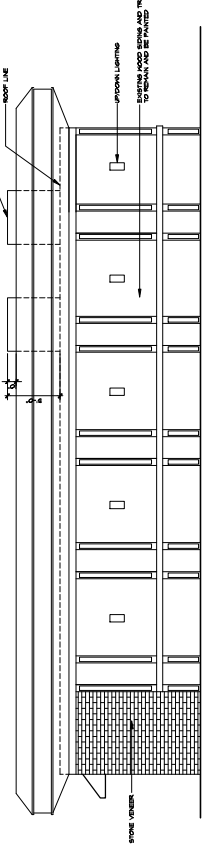
WEST ELEVATION
 SCALE 1/4"=1'-0"



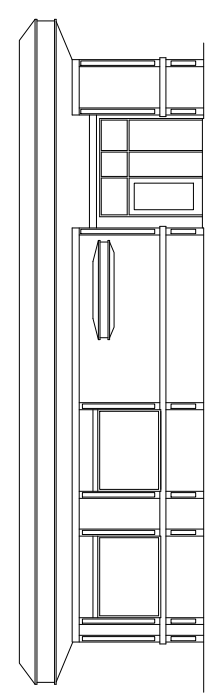
EAST ELEVATION
 SCALE 3/8"=1'-0"



NORTH ELEVATION
 SCALE 3/8"=1'-0"



SOUTH ELEVATION
 SCALE 3/8"=1'-0"



EXISTING WEST ELEVATION
 SCALE 3/8"=1'-0"